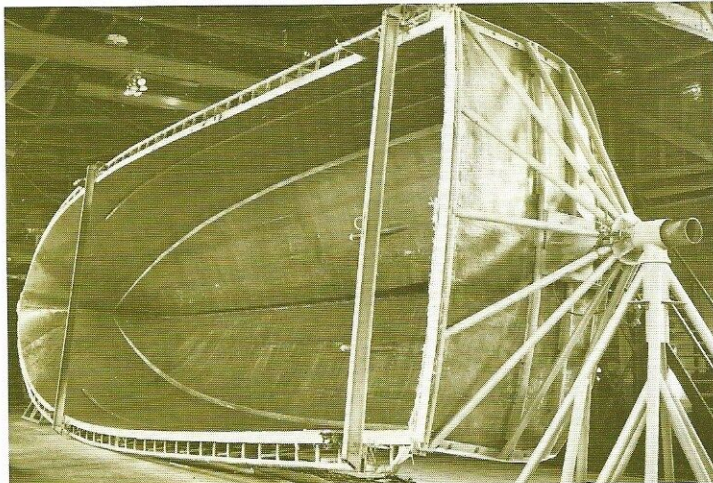
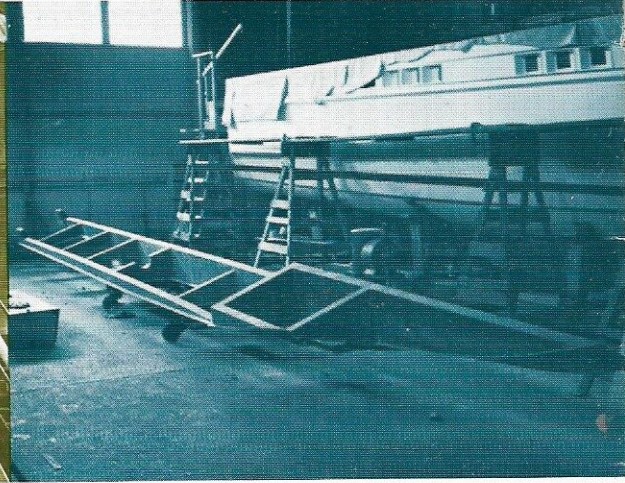


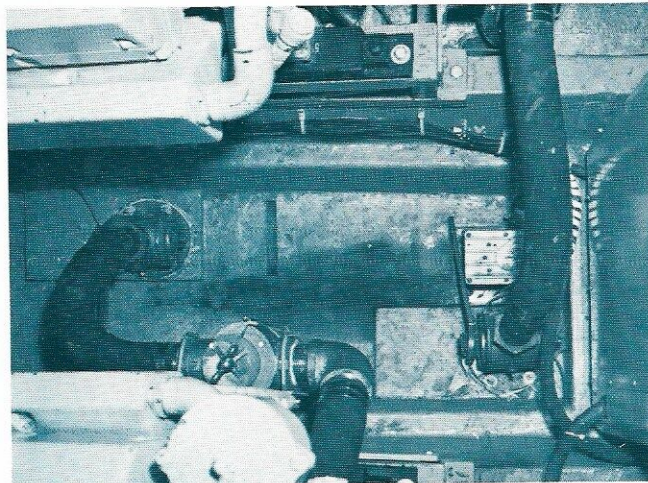
# construction that will reward YOU with extra YEARS OF Pleasurable CRUISING is a BASIC MATTHEWS INGREDIENT



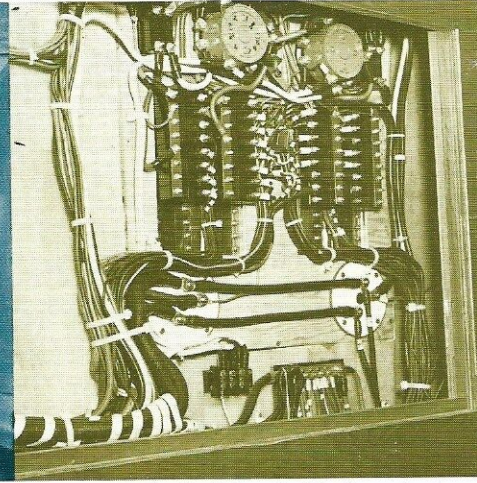
Mold for the Matthews 56' fiberglass hull. Mold rotates for better control in laminating.



Molded longitudinal stringers for Matthews 56' fiberglass hull.



Looking down on the heavy duty bronze engine intake sea cocks.



View showing back of the electrical panel. All components are approved by the Yacht Safety Bureau.

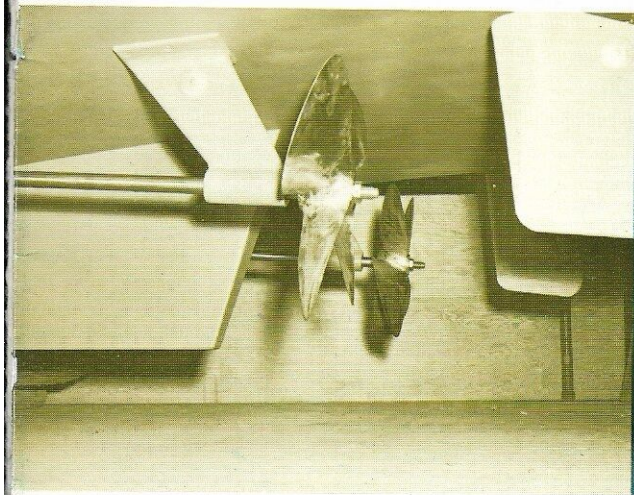
Matthews owners get more out of their boats because we build more into them in deep-down quality of materials, components and craftsmanship.

Hulls are a fortress of seagoing strength, ruggedly constructed of one-piece, molded fiberglass with a lustrous gel coat finish that is unexcelled for its permanence of beauty and easy maintenance. Decks are fiberglass with molded non-skid tread. They incorporate a deep, end grain balsa core for extra rigidity and strength. Heavy "hat section" longitudinals with foam core run full length. The unusually deep keel, also with foam core, adds

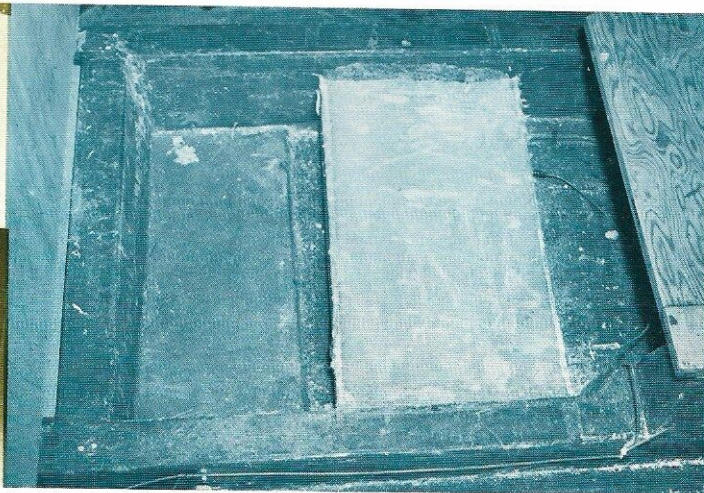
to the structural strength you expect in a Matthews, while protecting propellers from damage. The deep keel also gives outstanding hull stability for comfortable cruising, no matter how the seas are running.

All wood used in construction is generously treated with a special preservative. Bulkheads and floors are of the highest grade marine plywood. Cabinet work and trim are Philippine or Honduras mahogany and are fabricated with old-fashioned skill by craftsmen who build every Matthews as though they were building it for themselves.

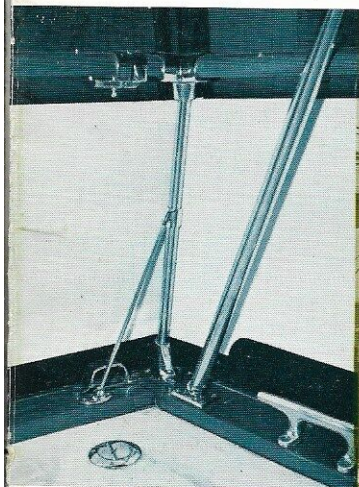
To provide exceptional quietness while run-



Propellers and keel showing the unique wheel protection afforded by the Matthews deep keel.



Looking down on sound deadening material inside hull over propellers.



Extra rugged handrail and deck hardware on Matthews 46'.



56' Voyager Motor Yacht about to be launched at the Matthews Yard for final finishing.

ning, engine rooms are heavily insulated with combined acoustical and sound barrier insulation.

Exact procedures are followed to provide the trouble free mechanical and electrical installations for which Matthews boats are noted. Rugged, welded steel hangers are mounted on substantial engine beds to provide more than ample support for gasoline or diesel engines. Custom made Cupro-Nickel water-cooled exhaust collectors are provided on all diesel installations. These, together with fiberglass mufflers, assure comfortably quiet operation.

A complete and easily observed main electrical panel is mounted close to the steering station, with all circuits protected by heavy-duty, reset type breakers. Plastic coated wire is used for maximum resistance to oil, moisture and heat. Matthews has been noted over the years for building hulls equipped for service in fresh or salt water. All fittings are bronze and all through-hull openings are provided with bronze seacocks.

For all of these reasons, and hundreds more, you will see, feel and sense *quality in depth* from the moment you first board your new Matthews.