



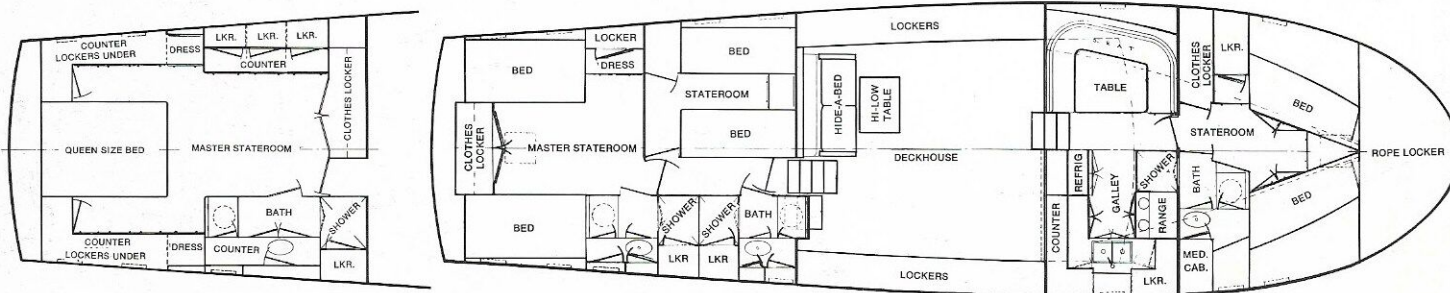
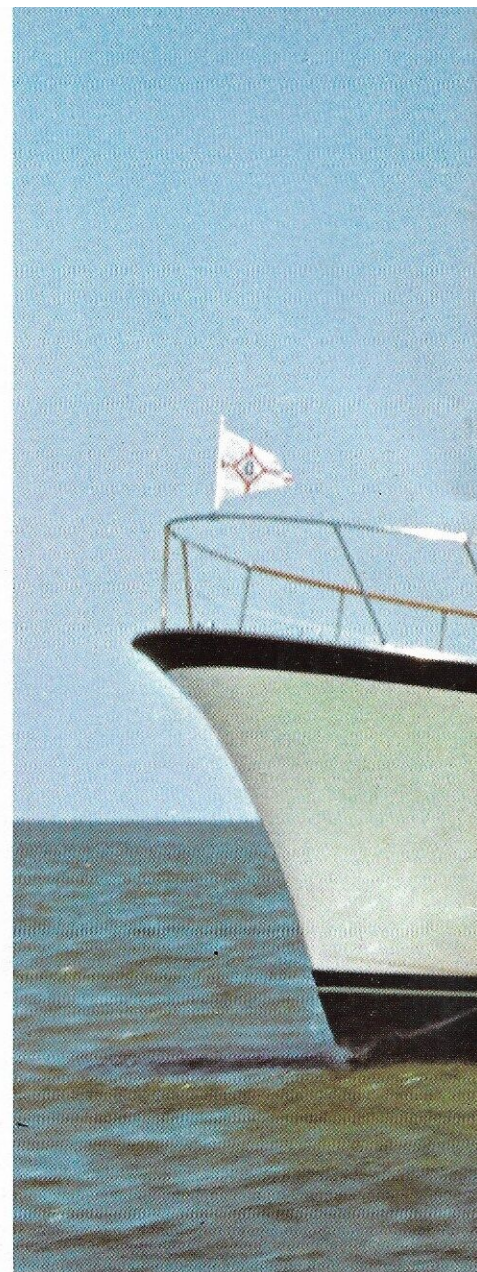
56' FIBERGLASS VOYAGEUR FLUSH DECK CRUISER

In the world of flush deck cruisers, this Matthews masterpiece stands alone in her size range for her blend of sumptuous accommodations, Matthews' traditional excellent seakeeping qualities and a ride that is incredibly soft, level and dry in any weather. Convenience and privacy stem from her innovative design. There is a private bath in the lavish master stateroom area and adjacent to each guest stateroom. Storage space is abundant. The large, all-electric

galley is superbly equipped to turn out tempting gourmet dishes. The main salon features an entertainment center with stereo AM-FM and a cartridge tape unit. Crews quarters are separate and the enclosed bridge will please the saltiest skipper with its complete array of instruments and controls. She's air conditioned throughout. And an unrivalled selection of decor options lets you tailor her to your own highly individual specifications.

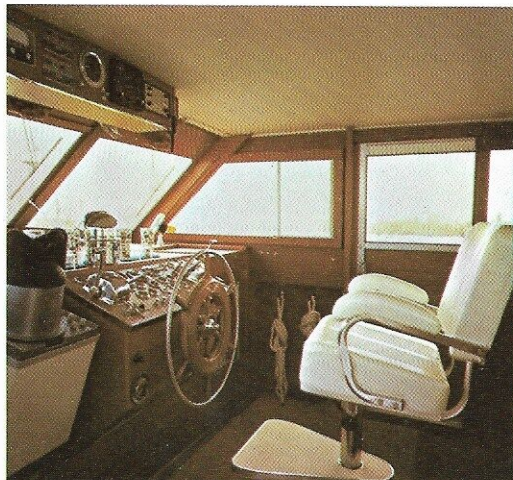
SPECIFICATIONS:

Length: 56'
 Beam: 16'
 Draft: 4'3"
 Freeboard Forward: 97"
 Freeboard Aft: 72"
 Fuel Capacity: 700 Gallons
 Water Capacity: 300 Gallons
 Weight (lbs. displacement):
 Approx. 62,000 lbs.
 Height from waterline to top of hardtop:
 Mast down — 13'8"
 Mast up — 16'10"
 Power options include GM 8-V71 (N), GM 8-V71 (T) and Cummins NT-380 Diesels and Ford Turbine.

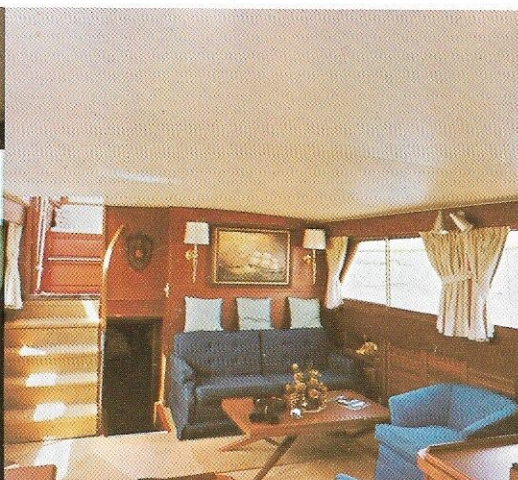


Single aft stateroom arrangement.

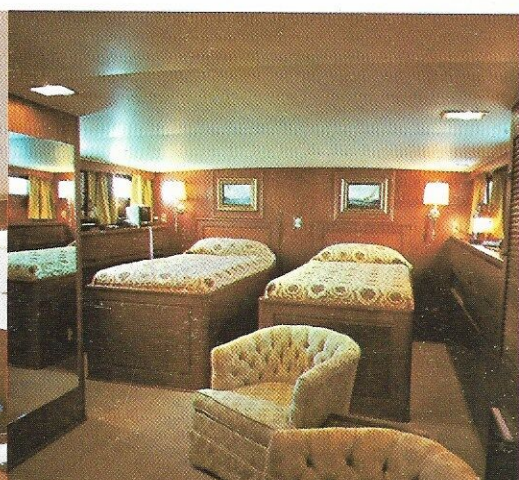
Double aft stateroom arrangement.



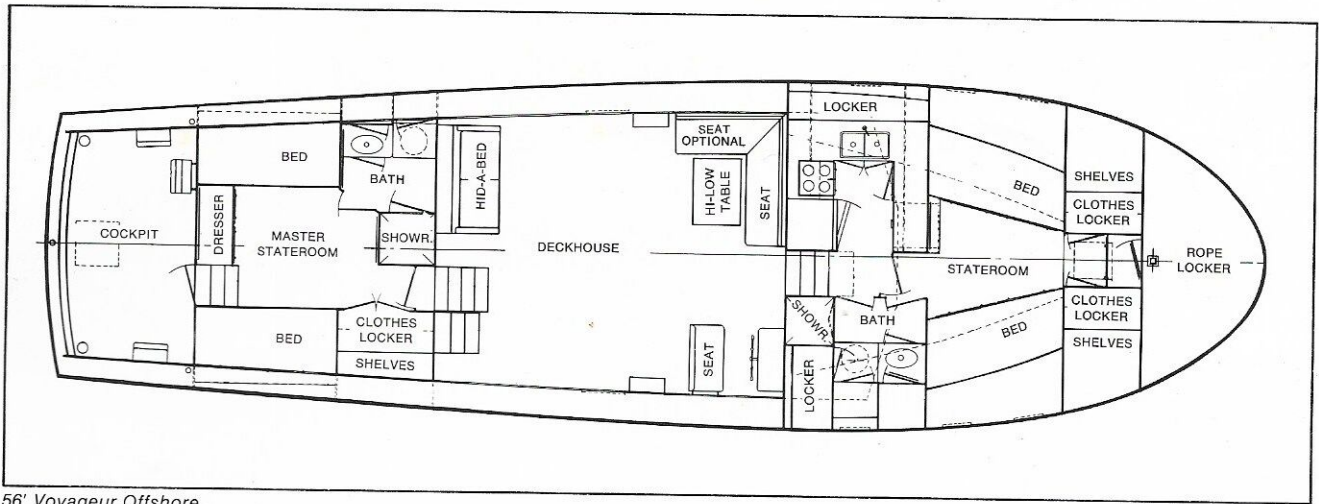
Superbly equipped bridge.



Main salon looking aft.

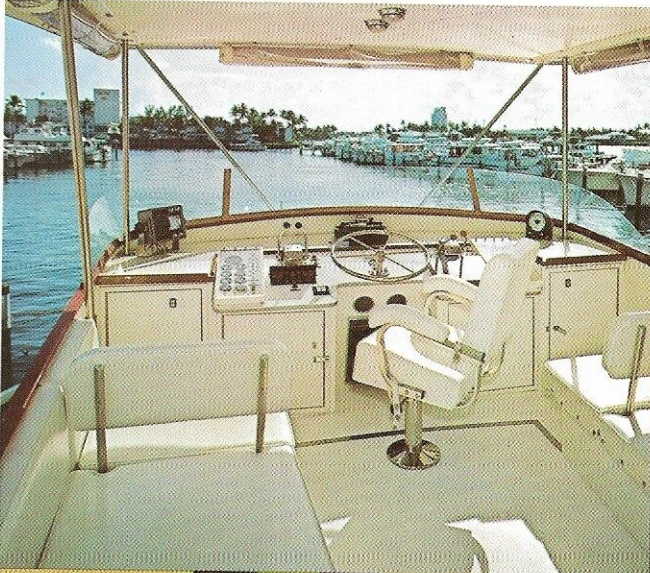


Master stateroom, single aft stateroom model.

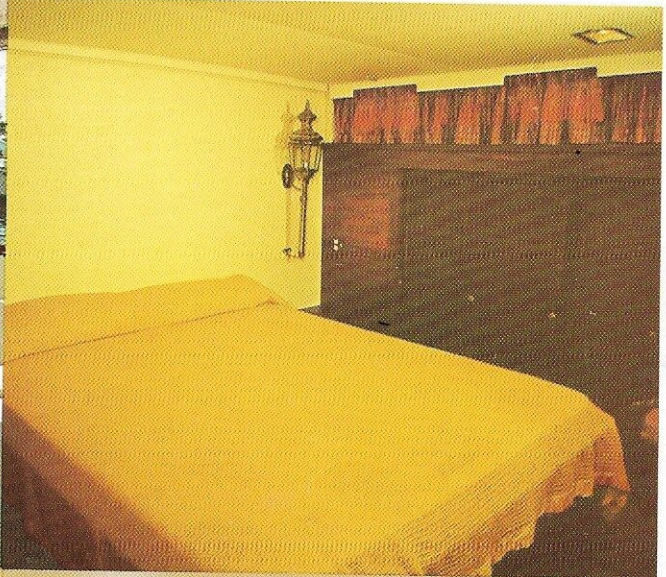


56' Voyager Offshore

Large flybridge provides ample space for control instruments and electronics.



Spacious master stateroom



All electric galley with full-size appliances



Looking forward in the large deckhouse

56' FIBERGLASS VOYAGEUR MOTOR YACHT

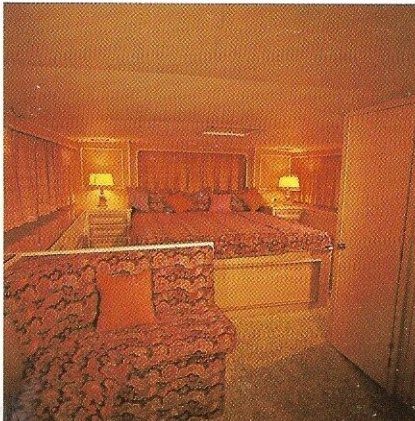
This superb 56-footer has a spaciousness and elegance not found in many yachts that are larger. She is a Motor Yacht, and has all of the attributes to make every moment aboard her an unforgettable experience in all-

weather comfort, convenience and luxury. The large double staterooms, each with its own private bath, pamper owner and guests with a unique blend of privacy and freedom. The pleasant crews quarters forward build

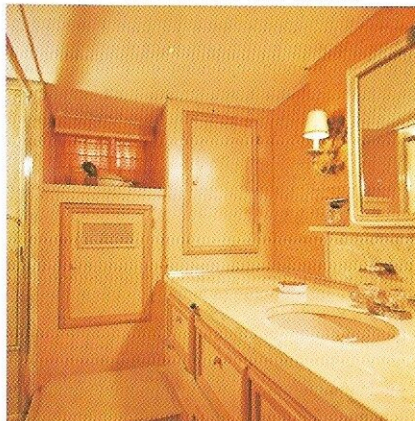
contentment. She'll take you to places you've always wanted to explore . . . on your own schedule . . . and secure in the knowledge her Matthews fiberglass hull is a fortress of strength that will carry you smoothly and



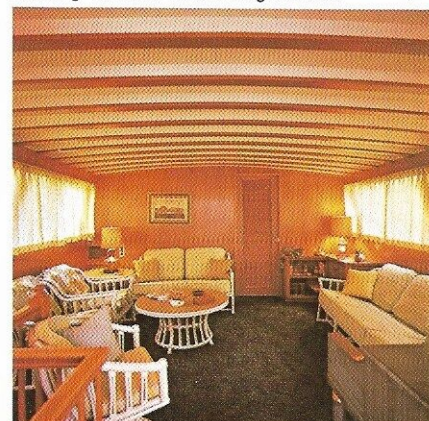
Master stateroom.



Master bath with full size tiled shower



Looking forward in the large salon.



surely in any sea. Her main salon is 14' x 15', with a most completely equipped all-electric galley and spacious dinette close at hand. Her standard equipment list is long and complete. It includes air conditioning

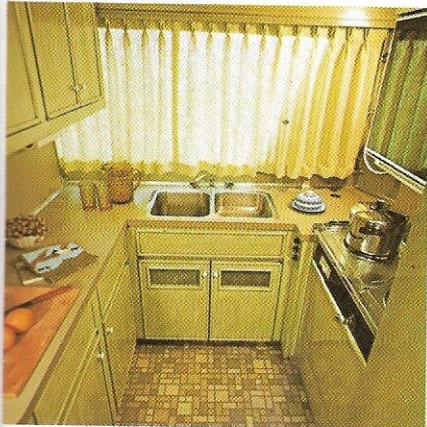
throughout with reverse cycle heating, a complete stereo entertainment center in the main salon and a large, separate wheel house forward of the galley area, with space for all electronic and navigational gear.

SPECIFICATIONS:

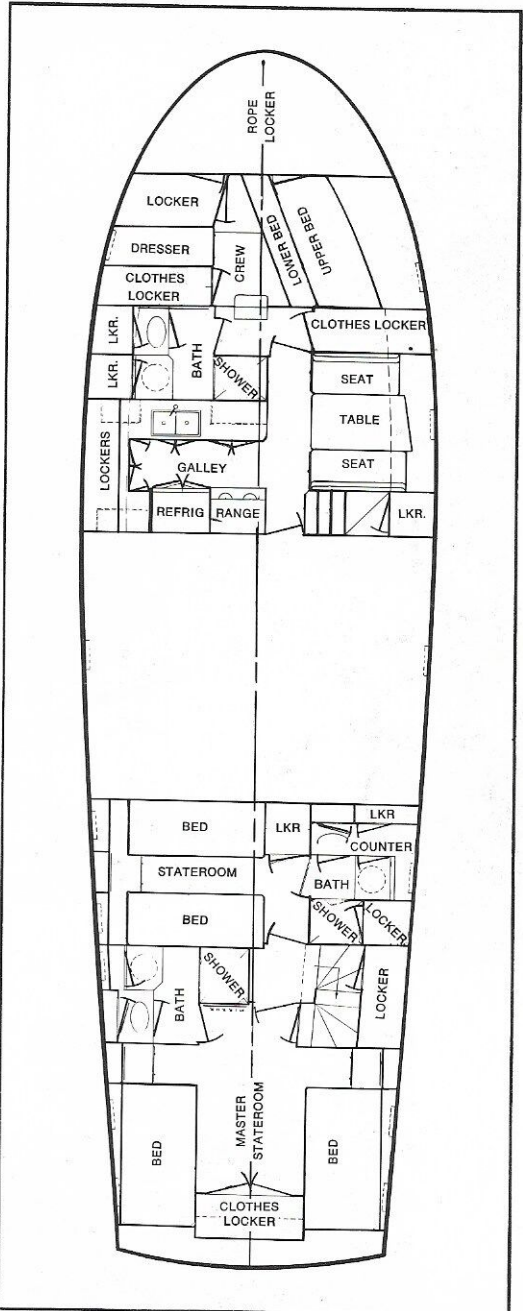
- Length: 56'
- Beam: 16'
- Draft: 4'3"
- Freeboard Forward: 97"
- Freeboard Aft: 72"
- Fuel Capacity: 700 Gallons
- Water Capacity: 300 Gallons
- Weight (lbs. displacement):
Approx. 66,000 lbs.
- Height from waterline to top of
Stack: 14'7"
- Power options include GM 8-V71 (N),
GM 8-V71 (T) and Cummins NT-380
Diesels and Ford Turbine.



Fully-equipped all-electric galley.



Bridge.



56' Voyager Motor Yacht

the magnificent MATTHEWS FIBERGLASS FLEET

